



# GAT MONTHLY MEMBERSHIP PROGRESS REPORT

Results as of: 4/30/2024

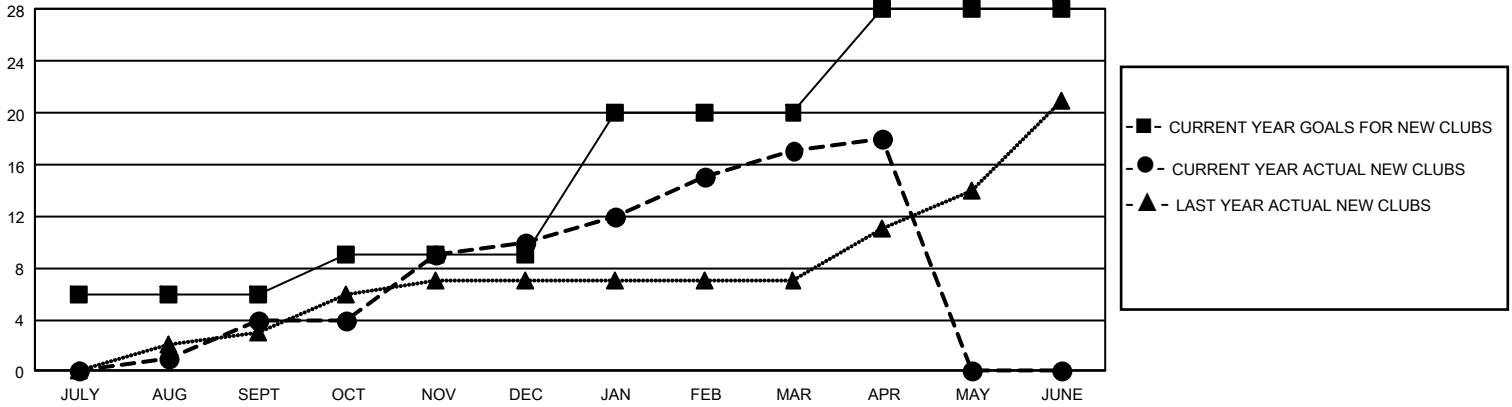
## GMT Constitutional Area 3, Group D

REPORT DOES NOT INCLUDE CLUBS IN UNDISTRICTED AREAS.

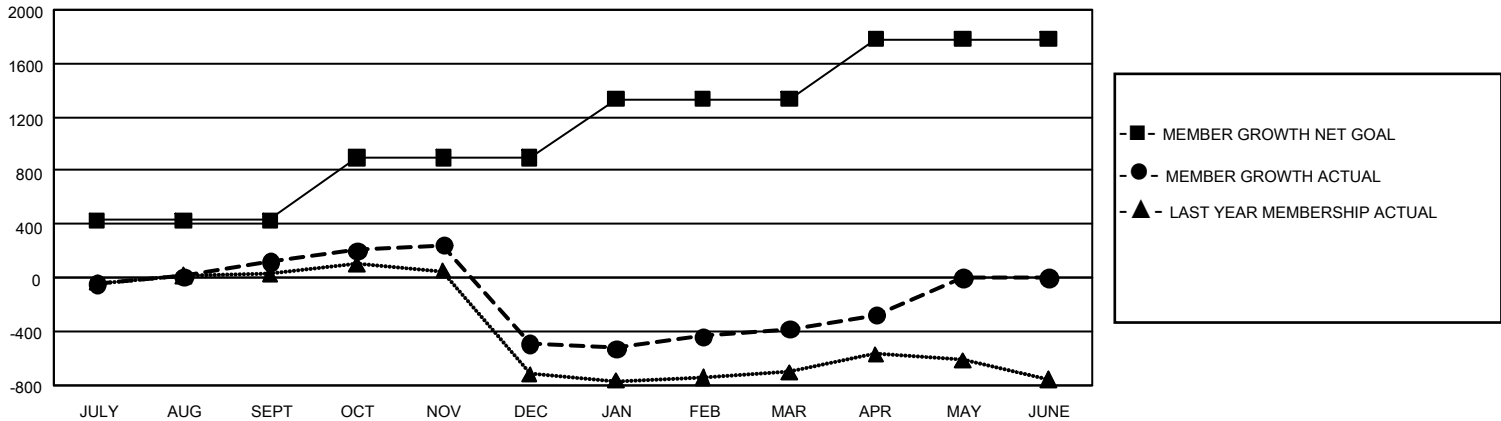
Clubs			
RESULTS FOR 2023-2024			
QUARTER	NEW CLUB GOAL	NEW CLUBS	DROPPED CLUBS
JULY/AUG/SEPT	18	4	5
OCT/NOV/DEC	9	6	7
JAN/FEB/MAR	33	7	8
APR/MAY/JUNE	24	1	1

Members			
RESULTS FOR 2023-2024			
QUARTER	MEMBER GROWTH NET GOAL	MEMBER GROWTH ACTUAL	DROPPED MEMBERS ACTUAL (including transfers)
JULY/AUG/SEPT	429	626	431
OCT/NOV/DEC	469	634	1,187
JAN/FEB/MAR	437	563	348
APR/MAY/JUNE	445	186	71

GOALS AND ACTUAL NEW CLUBS CUMULATIVE



GOALS AND ACTUAL MEMBERS CUMULATIVE



<b>DROPPED CLUBS: 21</b>  <b>DROPPED MEMBERS</b> DECEASED 91 CLUB CANCELLED 228 OTHER 1,718 <b>TOTAL 2,037</b>	432 CLUBS OF 776 ADDED 1 OR MORE NEW MEMBERS	<b>GENDER DISTRIBUTION</b> MALE 6,842 (45.78%) FEMALE 8,102 (54.21%) NON BINARY 1 (0.01%) PREFER NOT TO ANSWER 1 (0.01%)
	<a href="#">CLICK HERE FOR CUMULATIVE MEMBERSHIP DATA</a>	TOTAL FAMILY UNIT MEMBERS 5,044 FAMILY MEMBERS PAYING HALF DUES 2,869